



Regulations

WUSV World Championship Universal

1. General Provisions

The WUSV Universal Championship features a combination ranking.

- A) Trials (to be performed based on the currently valid examination regulations of the WUSV/ IGP at level 3)
- B) Health (HD and ED evaluations as recognized by the SV)
- C) Anatomy (Breed Show according to the requirements of the Working Dogs Class GHKL).

Only dogs shall be admitted who were selected by the national organization of their country of origin, and who passed an examination according to the WUSV/ IGP 3, and obtained a trial degree on that occasion, who obtained a breed evaluation with the ranking "GOOD" at the minimum age of twelve months and who can present a HD/ ED diagnostic in their pedigree with the SV recognized result of either *normal*, *almost normal* and *still admitted*.

Every registered dog must have a WUSV recognized pedigree.

Every national organization is entitled to register a team. A maximum of five starters can be registered by each country (only one dog per dog handler) plus one substitute starter.

The Champions (male and female) of the previous year automatically qualify to participate in the WUSV Universal Championship of the year to come and may be registered by their national organization in addition to the regular team.

The dog's owner and the dog's handler must have their **primary residence** within the WUSV member country for which the dog is presented.

Every handler may only present one dog.

Evaluation

- 1) The maximum points to be obtained are 600 (300 points for the trials, 100 points for health and 200 points for anatomy)
- 2) If dogs finish with equal scores, the higher points for health, followed by those for the breed evaluation and the placement at the show ranking shall be considered for the final placement.
- 3) Dogs who did not obtain a minimum of 70 points in the sections A to E (trial, health and breed evaluation) shall be put at the end of the ranking list without a specific placement.

Team Classification

For the team classification the results shall be considered that were obtained by three dogs who were registered by the national organization for the team competition, and who succeeded in the competition in sections A to E. The two best males and the best female shall be evaluated. .

2. WUSV Examination Regulations 3/IGP 3

A: Tracking Work

Laying of the Tracks

The laying of the tracks shall be carried out at a normal walking speed. The angles/ corners shall not be marked. The beginnings of the tracks shall not be stepped down. Alternative tracks shall be considered in terms of the schedule and will be laid if necessary. The objects shall not be laid in a certain way of order.

Tracking Objects

The tracking objects are made out of

- Wood
- Leather
- Felt



Size of the tracking objects approximately 10cm x 3cm x 0,5-1,0cm

The tracking board and the objects are provided by the host organization. All objects are clearly marked.

Group Drawing at the tracking field – Identity Check

Upon registration of the dog handlers for tracking a drawing is carried out. The drawing starts as soon as the last dog from the previous group has started the tracking exercise. Dog handlers who are not available on site the tracking area by the time they were scheduled for respectively upon the drawing shall also be considered. The track that was drawn remains reserved and shall be worked on at a later time. In case that the dog handler does not present him or herself before his or her group has finished the tracking work this automatically entails a disqualification. The identity check of the dogs shall be carried out after the tracking work is finalized.

Inspection of the tracking leash

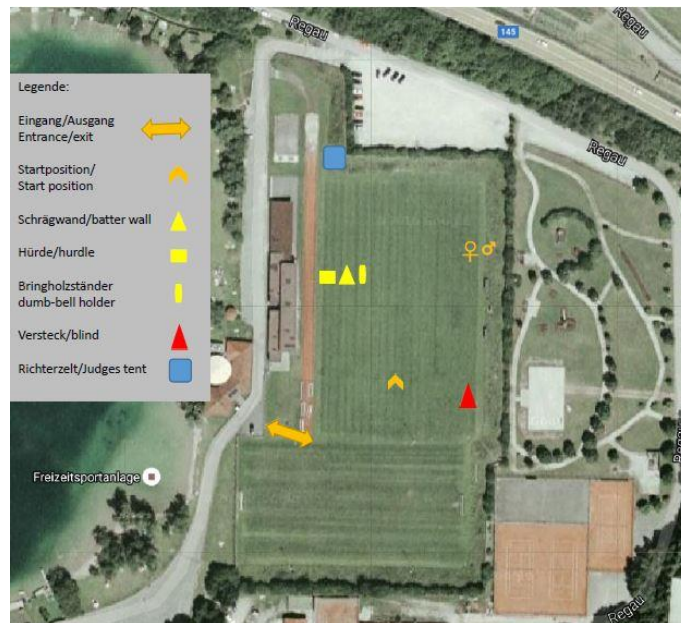
The tracking leash will be inspected for its correct length after the drawing by an authorized person on behalf of the trial organizer and marked accordingly. The tracking exercise may only be carried out with the leash that was previously marked as described above.

B: Obedience

For the running direction – please see scheme. The dogs are to be presented according to the running scheme as stipulated in the examination regulation.

The dog handlers may wear simple and sportive clothing (sweat suits) but no special training vests are allowed.

- **Photo aerial view/ Stadion Plan/ Sketch (according to the sample below)**



Admission Control at the entrance

The inspection of the collar shall be immediately carried out in the preparation area reserved for that purpose. A mere visual inspection is not allowed. The collar has to be handed over to the person in charge of the inspection procedure. The collar is then inspected for its compatibility with the examination regulations. Once, the collar was admitted by the trial judge no change of collar is admitted anymore.

A sufficient area in direct proximity of the competition area must be made available by the hosting organization for the preparation of the defence work exercise.

The dog has to arrive at the preparation area approximately 10 minutes before he or she is scheduled to start with the examination. The team captain must report the dog handler approximately 15 minutes before the start at the entrance area as *Ready to start*.

The participating dogs may only be presented with collars as stipulated in the examination regulations. The dog handler must carry a leash with him or her at any time. The leash may only be attached to the collar. Further leashes or ropes on the dog are not admitted. The dog handler may prepare the dog for the competition with positively associated objects (but no whips and such) or with food. Further means are not admitted. In case of an infringement the dog shall be disqualified from the competition.

The trial judge in charge is responsible for the supervision of the preparation area for obedience and defence work.

Identity Check

Before the dog's performance is reviewed, a trial judge carries out the identity check in the stadium. During the identity check the dog shall either stand or sit wearing a long respectively slack lead. For that purpose, the dog handler may turn the dog's head slightly to the side with his or her hand. However, the handler may not do the chip reading by him or herself.

The personnel are provided with an ISO recognized microchip identification scanner.

After the trial judge has announced his or her evaluation of the dog's performance, the animal has to be led off the field in a controlled fashion and the dog needs to behave in a neutral manner. Misbehaviour, displacement activities (such as biting into the rope) can lead to a

disqualification of the dog.

Prize Awarding

The official end of the event is marked by the announcement of the results (awarding ceremony) and by the return of the score book. Until and including the awarding ceremony the handlers have to present their dogs in a sporty and impeccable manner. The dogs have to act in a neutral fashion at any time. Misbehaviour, displacement activities (such as biting into the rope) can lead to a disqualification of the dog.

Group of Three Regulation for Obedience Exercises

For example, Starting Numbers 1,2,3

All the three teams (i.e., three handlers with their dogs) must register with the trial judge at the beginning of the obedience exercises.

- 1) Starting number 01 starts with the examination exercise, meanwhile starting number 02 performs the down position, and starting number 03 returns to the preparation area once more.
- 2) Starting number 03 continues with the examination exercise, starting number 01 performs the down position, and starting number 02 returns to the preparation area.
- 3) Starting number 02 continues with the examination exercise, starting number 03 performs the down position, and starting number 01 returns to the preparation area.

Hurdles/ Objects for Retrieval/ Pistols

Hurdles according to the valid examination regulations are made available. The A-frame is equipped with wooden strips and a slip-proof coating. The hurdles are removed from the exercise field during the defence work – the position shall be marked.

The weight and dimensions of the objects for retrieval correspond with the examination regulations. All retrieval exercises shall be carried out in running directions. The test for gun shyness (calibre 6 mm) shall be carried out on the first straight line.

Place for Down Position

Males and females perform the down position at different sites. The places are marked accordingly.

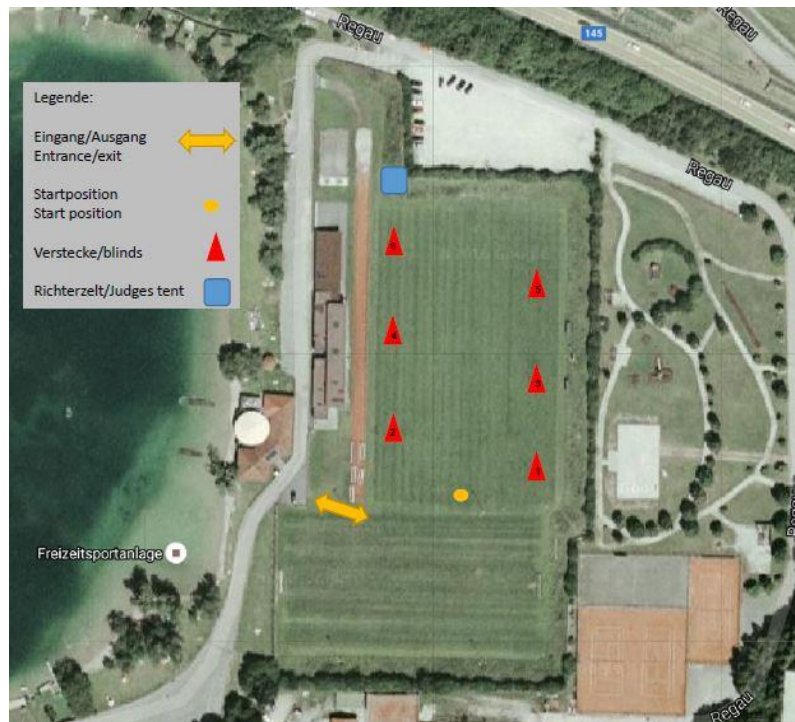
C: Defence Work

General Provisions

The defence work is to be performed on the sports ground. For the running direction please refer to the scheme. The first send out at the patrol for the helper goes to the right/ to the left (depending on the situation on site). The required markings for handler and helper will be made according to the IPO regulations. The selection of the helpers and the defence work training will be held according to the schedule provided.

The dog handler can wear light sportive clothing – however – no special training vest are permitted.

Sample Sketch



Entry and Identity Check

For details, please refer to section B for obedience.

Helpers – Defence Work

The final selection of the helpers for defence work and their respective substitutes shall take place before the presentation of the trial dogs on an external site by the WUSV Commissioner for Trial and Training, the WUSV Head Judge and the Judge for Section C. The selected helpers shall be presented on the occasion of the presentation of the trial dogs.

Protective Clothing

The standard protective clothing for helpers is as follows: jacket, trousers, a protection sleeve and cleated shoes. Soft sticks (*Softstöcke*) are to be used during the examinations. The brand is left up to the helpers' discretion.

Hiding Places – Protection Blinds

The hiding places provided will be standard tents for defence work. The blinds and hiding places are removed from the exercise field while obedience examinations are performed on the same site. The positions shall be marked.

3. Health Requirements

The results of the HD and ED diagnostics (only accepted from SV recognized evaluation offices) shall be included in the rating list.

HD: A / ED: A = 100 Points

HD: A / ED: B or HD: B / ED: A = 95 Points

HD: B / ED: B = 90 Points

HD: A / ED: C or HD: C / ED: A = 80 Points

HD: B / ED: C or HD: C / ED: B = 75 Points

HD: C / ED: C = 70 Points

Dogs who obtained worse results shall not be admitted to the competition.

4. Conformation Show

The show section shall be rated according to the classes and be divided by MALES and FEMALES. Both hair varieties are presented and rated in their respective classes. The breed show is held according the requirements of the GHKL working dog classes (WUSV Breeding Program).

The class winner shall be awarded 100 Points, the second winner 98 Points, etc. (with a downgrading of two points for each of the next following ranking).

In addition, breed valuations are offered. The ranking is carried out as follows:

- Excellent/ Vorzüglich = 100 Points
- Very good/ Sehr gut = 90 Points
- Good/ Gut = 80 Points
- Sufficient/ Genügend = 70 Points
- Insufficient/ Ungenügend = 60 Points
- Unsatisfactory = 50 Points

Disqualification/ Ranking

In case that a dog is disqualified from one section he or she may no longer start in the following respectively next section.

Only dogs can take part in the ranking who gained at least 70 points in sections A to E.

In case of a tie situation the higher ranking for health, followed by the result of the breed evaluation, and then the show placement shall be considered for the final ranking.

Evaluation Scheme

Trial/Sport Dogs Examination			Total A-C	Health D	Anatomy		Total D-E	Total Points	Ranking
A	B	C			E	F			
Nosework	Obedience	Defence Work		HD/ ED A/A = 100 P A/B = 95 P B/A = 95 P B/B = 90 P A/C = 80 P C/A = 80 P B/C = 75 P C/B = 75 P C/C = 70 P	Breed Evaluation Excellent = 100 P Very Good = 90 P Good = 80 P Sufficient = 70 P Insufficient = 60 P Unsatisfactory = 50 P	Ranking Show 1 = 100 P 2 = 98 P 3 = 96 P 4 = 94 P		600 possible	

Starting Numbers

The starting vests remain property of the dog handler after the championship.

The starting vests with the numbers on have to be worn during the training periods, the opening ceremony, the drawing of the starting times as well as during the individual sections of the competition.

5. Program of the WUSV Universal Championship

Wednesday

Time of Day Opening of the Competition Office
Veterinary Examinations and Fitness Tests for the dogs

Thursday

Time of Day Veterinary Examinations and Fitness Tests for the dogs
Official Training at the stadium
Judges Meeting
Captains Meeting & Drawing of the team sequences for the later drawing of the participants, followed by trial defence work at the stadium.
Official Opening of the Universal Championship, followed by the drawing at xxx (*a suitable venue at the discretion of the hosting organization*).
Participation in the opening ceremony and the drawing is mandatory and the starting vests with the numbers on have to be worn on those occasions.

Friday

Time of Day Beginning of the competition at the stadium and beginning of the tracking work.

Dogs in Show Stance – Females
Judgement of the Dogs in Motion – Females

Saturday

Time of Day Beginning of the competition at the stadium and beginning of the tracking work.

Dogs in Show Stance – Males
Judgement of Dogs in Motion – Males
Festive Evening (optional)

Sunday

Time of Day Beginning of the competition at the stadium
Prize Awarding and Closing Ceremony at the stadium

The schedule of the program is subject to change – depending on the number of registered dogs to the event.

The show competition can be carried out for both genders on the same day – however, either on Friday or on Saturday.